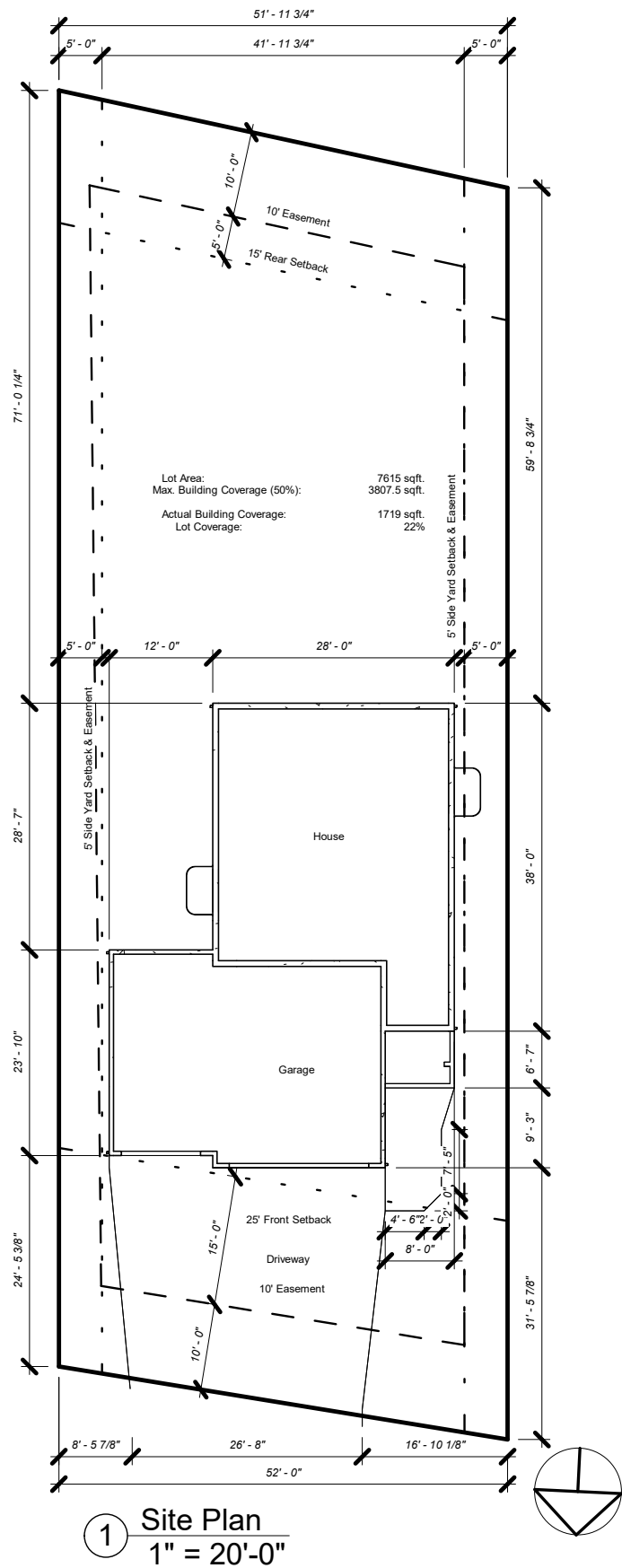


Lost River 5th
Block 7 Lot 23



1 Site Plan
1" = 20'-0"

Drawing Approval		2086_2 Story CLASSIC FINISH Foundation: 2020 Standard Truss: 2020 Standard	
Buyer:			
Buyer:			
Date:		Address: 7884 Cottonwood Blvd, Horace, ND 58047	
<div><div><div>1. Provide gap between T&G OSB subfloor sheets as per manufacturer specs.</div><div>2. Rough in washer on left/dryer on right</div><div>3. Contractors must request an updated set of plans before beginning each phase of the project.</div><div>4. Cabinet plans must be requested when needed. Plans on drawings are only a placeholder.</div><div>5. All truss locations must be verified with plumbing fixture locations. Shift as req. for plumbing walls and fixtures.</div><div>6. Framing sub contractor to provide backing for handrail.</div><div>7. Framing sub contractor to provide backing for tub.</div><div>8. Field frame vault in kitchen w/ 2x6 to match vault in truss.</div><div>9. Provide attic access (see detail xx/xx). Minimum 21 1/2"W X 30" L X 18" H Location as indicated on plans.</div><div>10. Firewall must be completely sheeted w/ OSB up to roof deck. If garage roof truss is against firewall 2x4 uprights must be placed as req. to install drywall.</div><div>11. Frame Cantilever in garage down to floor.</div><div>12. Fasten all half walls to floor system</div><div>13. Glue perimeter wall plates</div><div>14. Fireblock areas required by local code</div><div>15. Garage slab height with floor drain (- 2") around perimeter. Without floor drain (-1") at back wall and (-4") at garage door.</div><div>16. All plumbing walls on exterior need to be placed after insulation.</div><div>17. Exterior lighting dimensions taken from top of foundation to center line of wire. See elevations for dimensions.</div><div>18. Continuous handrail backer to be installed between 32"-36" high from top of tread.</div><div>19. Interior door framing to be 4" from corner unless noted otherwise or centered in space.</div></div></div>			
Plan Notes:		Prepared By: CDF	
		Site Plan	
		Sheet A1.00	